

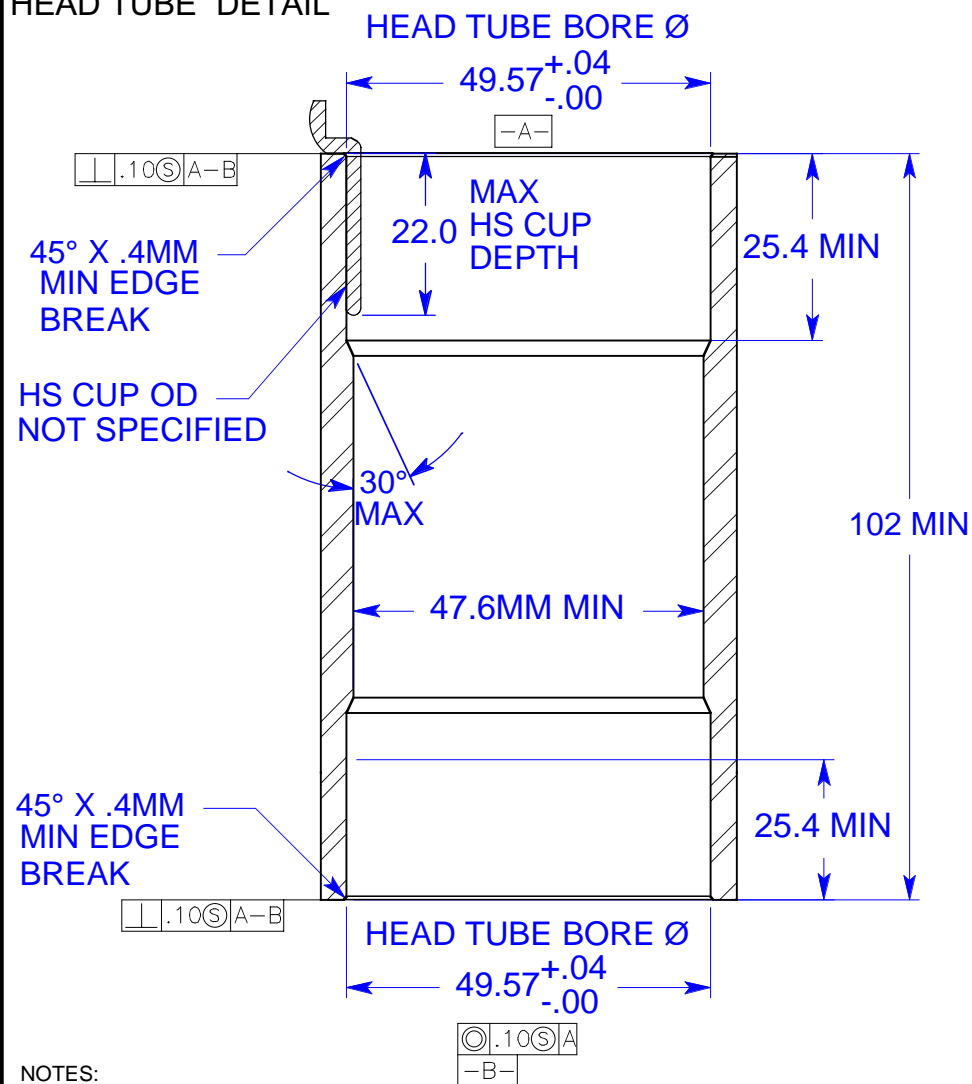
THE INFORMATION CONTAINED IN THIS DRAWING IS SUBJECT TO THE LEGAL AGREEMENT FOUND ON WWW.ONEPOINTFIVESTANDARD.COM. USE OF THE INFORMATION CONTAINED IN THIS DRAWING IS FORBIDDEN WITHOUT REVIEWING AND AGREEING TO THE LEGAL TERMS AND CONDITIONS FOUND ON WWW.ONEPOINTFIVESTANDARD.COM. BY USING THE INFORMATION CONTAINED IN THIS DRAWING YOU ARE CERTIFYING THAT YOU HAVE AGREED TO THE TERMS AND CONDITIONS FOUND WITHIN THAT LEGAL AGREEMENT.

WWW.ONEPOINTFIVESTANDARD.COM

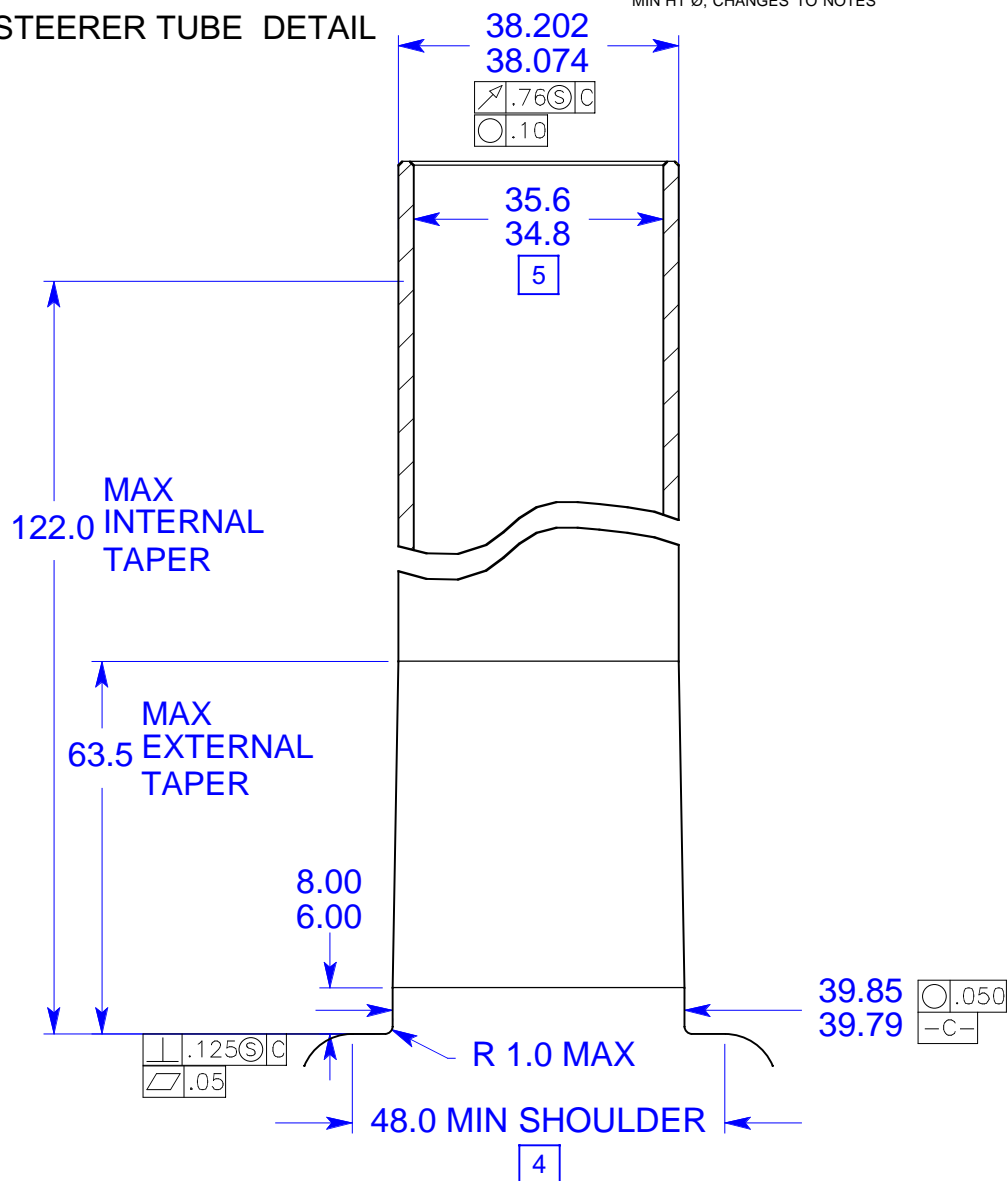
REVISIONS

REV.	DATE	CHANGES
1	12/5/01	PUBLIC RELEASE
2	12/18/01	INCREASE BORE Ø, ADD ROUNDNESS CALLOUT AT TOP OF STEERER, INCREASE MAX INTERNAL TAPER, ADJUST STEERER Ø
3	4/2/02	ADD HS CUP AND MAX DEPTH, 30° LEAD, INCREASE MIN HT Ø, CHANGES TO NOTES

HEAD TUBE DETAIL



STEERER TUBE DETAIL



NOTES:

- RECOMMENDATION FOR PROPER FIT OF COMMON AXIAL PRELOAD DEVICE ONLY
- IF THE CROWN SHOULDER IS GREATER THAN Ø 2.10", AT LEAST 2 CROWN RACE REMOVAL FEATURES MUST BE PROVIDED.
- LOWER HEADSET STACK HEIGHT = 0.50"-0.67"
- ALL DIMENSIONS ARE POST WELD, POST HEAT TREAT, POST PAINT/COATING
- ALL DIMENSIONS AND TOLERANCES SHOWN ARE FOR PROPER HEADSET FIT AND FUNCTION ONLY. THESE DIMENSIONS AND TOLERANCES DO NOT TAKE THE PLACE OF PROPER FRAME, HEADSET OR STEERER DESIGN.

UNLESS OTHERWISE SPECIFIED:

DIMENSIONS IN MILLIMETERS

.X±2.5 .XX±.25 .XXX±.13

DATE
4/2/02

NAME

ONE POINT FIVE INTERFACE STANDARD

PART NUMBER

METRIC UNITS

REV

3

SIZE
A

SCALE
NONE

SHEET 1 OF 1